

27/05/07

---

ak





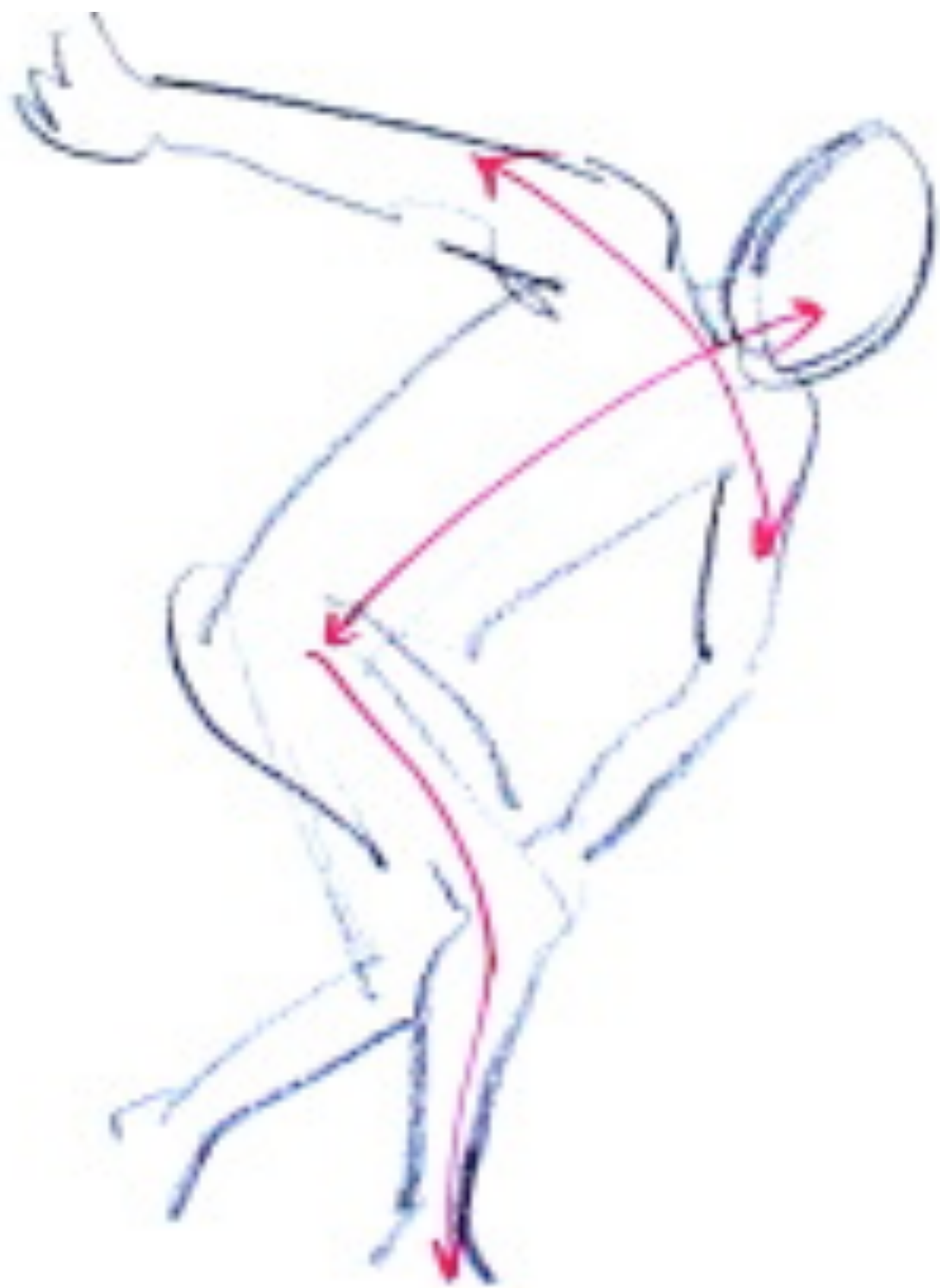






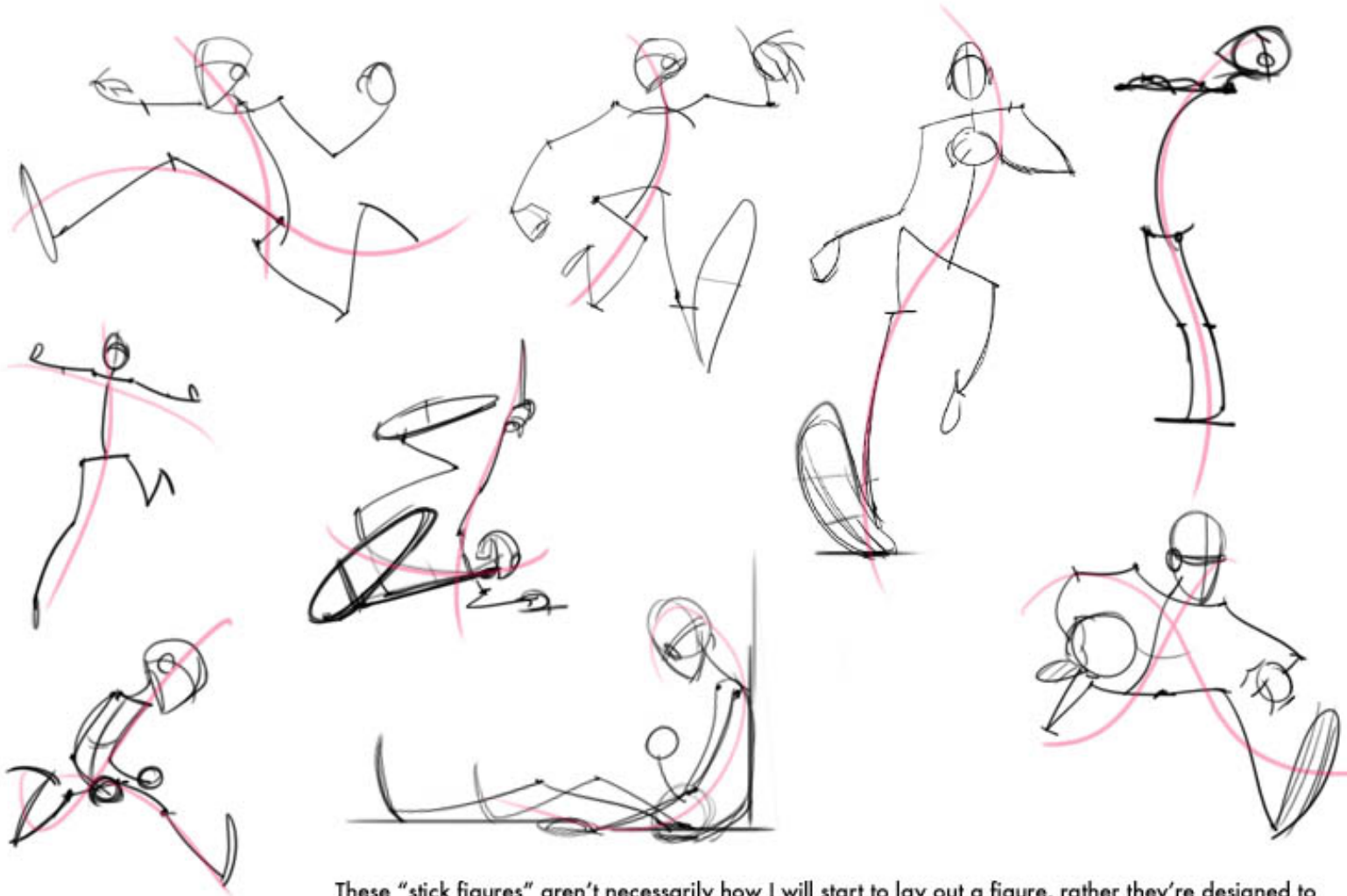








The black lines are gestural drawings from illustrations I've done in the past. The red lines are the "theme," or more general direction of the pose.



These "stick figures" aren't necessarily how I will start to lay out a figure, rather they're designed to illustrate what the gesture should convey. Through trial and error, you'll eventually find your own way of laying in a gesture on which you can add more detail later.